

User's Guide 5605

Congratulations upon your selection of this CASIO watch.

Important!

- This manual provides a brief overview of your watch.

E-1

For a full Operation Guide and Q&A information about this product, go to the website below.
<https://world.casio.com/manual/wat/>



Contents

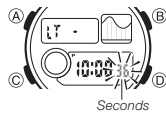
Configuring Home City, Time and Date Settings..... E-4
 Mode Selection and Operations E-7
 Specifications..... E-14

E-2

E-3

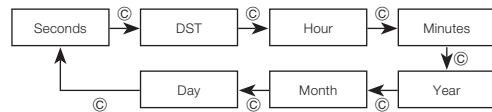
Configuring Home City, Time and Date Settings

- Configure Home City and summer time settings first. After that, configure time and date settings.



1. In the Timekeeping Mode, hold down (A) until the seconds start to flash, which indicates the setting screen.

2. Press (C) to move the flashing in the sequence shown below to select the other settings.



E-4

E-5

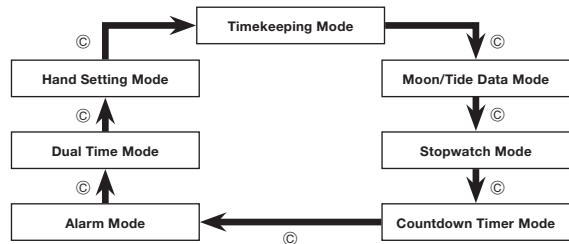
3. Use (B) and (D) to change the selected setting.

Screen	To do this:	Do this:
36	Reset the seconds to 00	Press (C).
ON / OF	Toggle between Daylight Saving Time (ON) and Standard Time (OF)	
10:00	Change the hour or minutes	Use (D) (+) and (B) (-).
20 19	Change the year	
6-30	Change the month or day	

4. Press (A) twice to exit the setting screen.

Mode Selection and Operations

- Press (C) to cycle between modes.



E-6

E-7

Timekeeping Mode



Switches between 12-/24-hour time.

Moon/Tide Data Mode

Switches between TIDE/MOON screens.



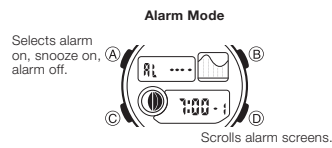
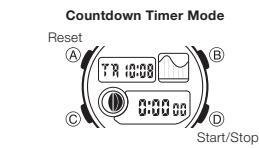
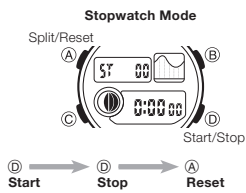
- Scrolls hour forward (TIDE screen).
- Scrolls day forward (MOON screen).

- (A) (at least 1 second): Time, date setting screen
- (A): Home Site Data Setting Screen
- (C): Cycles between UTC differential, longitude, east longitude/west longitude, lunital interval hours, lunital interval minutes.
- (D), (B): Change selected setting.
- (A): Exits setting screen.

- (A) (at least 1 second): Date setting screen
- (C): Selects year, month, or day.
- (D), (B): Change selected setting.
- (A): Exits setting screen.

E-8

E-9

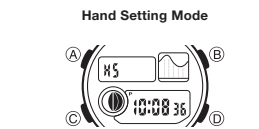
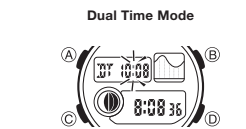


- (A) (at least 1 second while start time displayed): Start time setting screen
- (C): Selects hours, minutes, auto repeat (on/off).
- (D), (B): Change selected setting.
- (D): Auto-repeat on/off
- (A): Exits setting screen.

- (A) (at least 1 second): Alarm time setting screen
- (C): Selects hour, minute, month, day.
- (D), (B): Change selected setting.
- (A): Exits setting screen.

E-10

E-11



- (A) (at least 1 second): Dual Time setting screen
- (C): Selects DST, hour, minute.
- (D): DST setting
- (D), (B): Change selected setting.
- (A): Exits setting screen.

- (A) (at least 1 second): Analog hand setting screen
- (D): Advances minute hand 20 seconds.
- (B) (holding down (D)): Locks high-speed hand movement.
- (A): Exits setting screen.

Light

- (B): Illuminates face.

E-12

E-13

Specifications

Accuracy at normal temperature: ±30 seconds a month

Digital Timekeeping: Hour, minutes, seconds, a.m./p.m. (P), month, day, day of the week

Time format: 12-hour and 24-hour
 Calendar system: Full Auto-calendar pre-programmed from the year 2000 to 2099
 Other: Daylight Saving Time (summer time)/Standard Time; Home Site data settings (UTC differential, longitude, lunital interval)

Analog Timekeeping: Hour, minutes (hand moves every 20 seconds)

Moon/Tide Data: Tide level for a specified date and time; Moon phase indicator and Moon age for a specified date

Stopwatch:

Measuring unit: 1/100 second
 Measuring capacity: 23:59'59.99"
 Measuring modes: Elapsed time, split time, two finishes

Countdown Timer:

Measuring unit: 1 second
 Input range: 1 minute to 24 hours (1-minute increments and 1-hour increments)
 Time up alert duration: 10 seconds
 Other: Auto-repeat timing

Alarms: 3 Multi-function alarms* (1 with snooze feature); Hourly Time Signal

* Alarm type: Daily alarm, Date alarm, 1-month alarm, Monthly alarm
 Alert duration: 10 seconds

Dual Time: Hour, minutes, seconds, a.m./p.m. (P)

Other: Daylight Saving Time (summer time)/Standard Time

Illumination: LED (light-emitting diode); Auto Light Switch; selectable illumination duration (approximately 1.5 seconds or 3 seconds)

Other: Button operation tone on/off

Battery: One lithium battery (Type: CR1220)

Approximately 3 years on type CR1220 (assuming alarm operation 10 sec./day and one illumination operation 1.5 sec./day)

Frequent use of illumination runs down the battery.

Specifications are subject to change without notice.

E-14

E-15

Site/Lunital Interval Data List

Site/Lunital Interval Data List

Site	UTC Differential Standard Time	Longitude	Lunital Interval
Anchorage	-9	149°W	5:40
Bahamas	-5	77°W	7:30
Baja, California	-7	110°W	8:40
Bangkok	+7	101°E	4:40
Boston	-5	71°W	11:20
Buenos Aires	-3	58°W	6:00
Casablanca	+0	8°W	1:30
Christmas Island	+14	158°W	4:00
Dakar	+0	17°W	7:40
Gold Coast	+10	154°E	8:30
Great Barrier Reef, Cairns	+10	146°E	9:40
Guam	+10	145°E	7:40

L-2

Site	UTC Differential Standard Time	Longitude	Lunital Interval
Hamburg	+1	10°E	4:50
Hong Kong	+8	114°E	9:10
Honolulu	-10	158°W	3:40
Jakarta	+7	107°E	0:00
Jeddah	+3	39°E	6:30
Karachi	+5	67°E	10:10
Kona, Hawaii	-10	156°W	4:00
Lima	-5	77°W	5:20
Lisbon	+0	9°W	2:00
London	+0	0°E	1:10
Los Angeles	-8	118°W	9:20
Maldives	+5	74°E	0:10
Manila	+8	121°E	10:30

L-3

Site	UTC Differential Standard Time	Longitude	Lunitidal Interval
Mauritius	+4	57°E	0:50
Melbourne	+10	145°E	2:10
Miami	-5	80°W	7:30
Noumea	+11	166°E	8:30
Pago Pago	-11	171°W	6:40
Palau	+9	135°E	7:30
Panama City	-5	80°W	3:00
Papeete	-10	150°W	0:10
Rio De Janeiro	-3	43°W	3:10
Seattle	-8	122°W	4:20
Shanghai	+8	121°E	1:20
Singapore	+8	104°E	10:20
Sydney	+10	151°E	8:40

L-4

Site	UTC Differential Standard Time	Longitude	Lunitidal Interval
Tokyo	+9	140°E	5:20
Vancouver	-8	123°W	5:10
Wellington	+12	175°E	4:50

- The contents of the above table are current as of July 2018.
- The rules governing global times (UTC offset and GMT differential) and summer time are determined by each individual country.

L-5